

COUNTRY COLLECTIBLES PRESENTS #34

DISTINCTIVE

RECOUP YOUR \$\$\$
WITH MUST-HAVE FEATURES

Kitchen

SOLUTIONS

DOUBLE ISSUE!

52 BRILLIANT KITCHENS & BATHS

BEST ADVICE FROM TOP DESIGNERS

**THE BIGGEST
VARIETY OF
STYLES...EVER!**

**INNOVATIVE
DESIGNS FOR
PROBLEM SPACES**

**LUXURY BATH
ON A BUDGET**

SEE HOW DIFFERENT
PRODUCTS & MATERIALS
WILL AFFECT YOUR ROOM





ARCHITECT AND DESIGNER:

Barney Maier and Peter Feinmann
Feinmann Inc.
1378 Massachusetts Ave.
Arlington, MA 02476
781-643-6269

LOCATION:

Arlington, MA

DIMENSIONS:

26' by 18'

SPECIAL FEATURES:

Contemporary kitchen within Victorian house; Skylighted spine to link house and garden; Dropped ceiling

PRODUCTS USED:

Cabinetry, countertops:

Arclinea Boston, Arclinea Arredamenti SPA, Italy

Countertops: Marble

Refrigerator/freezer:

Sub-Zero

Cooktops, wok, wall oven:

Gaggenau

Dishwasher: Miele

Sinks: Arclinea

Faucets: KWC

Garbage disposal: In-Sink-Erator

Floor tiles: Eifflegras

Windows: Pella Architect

Skylights: Thermo-Vu

A rolling ladder gives the owners easy access to tall upper cabinets.

WISH LIST

- Strong connection to garden
- Professional-quality equipment
- Good lighting

blue cabinets with appliances and white Carrera marble countertops already installed for a discounted price.

The challenge for architect Barney Maier was to integrate the very contemporary cabinetry in a contemporary kitchen, yet one that wouldn't look dated after several years and would also fit with the main Victorian design.

Maier allowed his design, which includes an addition, to peek through with horizontal bands of windows on the exterior. Once within, the design looks completely contemporary with a skylighted spine to the garden, along which was placed a six-shelf bookcase. Each shelf space is high enough to fit a big cookbook. The garden's redesign is part of phase two, which includes plans to develop a landscaped herb garden.

But the heart of the design is two of the three cabinet units, each measuring 4' by 8', which Maier wanted as centerpieces of the design. To do so, he floated them within the center of the space rather than against walls. One contains a sink, stove and hood; the second a larger sink and work surface.

A third cabinet unit, 9 feet long and with refrigerator units, tall storage and blue cabinets, was placed against a wall. The blue cabinets were made from Solid Ray, a compressed highly-durable acrylic that's also reflective, and is an appropriate color in this case, since the wife studied at Le Cordon Bleu in Paris.

Arclinea Boston owner Philip Guarino is as delighted with the results as everyone else is. "The kitchen truly represents the spirit of Arclinea. It's a standard for the serious chef and the product of exquisite design," he says.

floor plan





A band of horizontal windows lets light into the airy kitchen.

Designing a new kitchen in a Second-Empire-style Victorian home in a leafy New England suburb required great imagination and a skillful eye and hand. The kudos go to several who collaborated on the project: the Italian company that designed cabinet units, the owners who saw the components as the jumping-off point for their new kitchen—and the architect who developed the novel way to blend new and old.

Because both clients love to cook and the wife is a chef, they wanted an appropriate space instead of what they had in their 1870s house. The couple set the plan in motion after seeing Arclinea's sleek designs. Because the showroom was moving to Boston, it offered the stainless steel and glossy

1870s victorian updated

LETTING A MODERN DESIGN PEEK
OUT FROM A GRACIOUS LADY

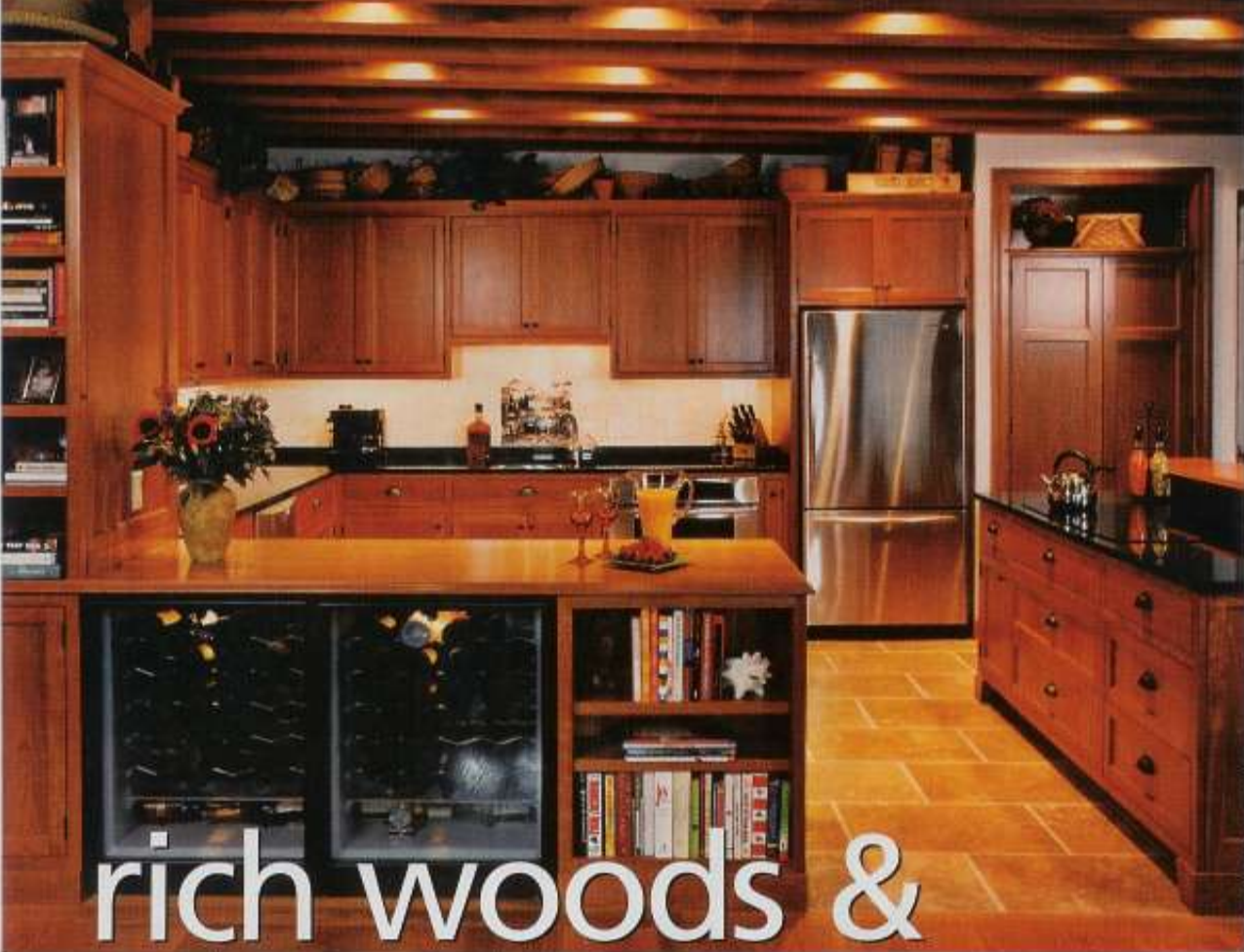
Two generous islands offer plenty of workspace for serious cooking.



JOHN HORNBE PHOTOGRAPHY, WILMINGTON, MA



A panel above the islands visually anchors the large open space.



DAVID CURRACK, BOSTON, MA

rich woods &

stone

A FORMER SPICE WAREHOUSE GETS ITS KITCHEN SPIFFED UP

WISH LIST

- Maintain beams and brick walls
- Use tiles brought back from Turkey in backsplash
- Make kitchen open to living and dining areas

Designing a kitchen that's appropriate to the original spirit of its building requires a deft hand when shiny new materials and big hulking equipment are very persuasive come-ons. But designer/remodeler Peter Feinmann of Peter Feinmann Inc. in Arlington, Massachusetts, knew just how to retain an original structure's charm while making it work for a busy couple.

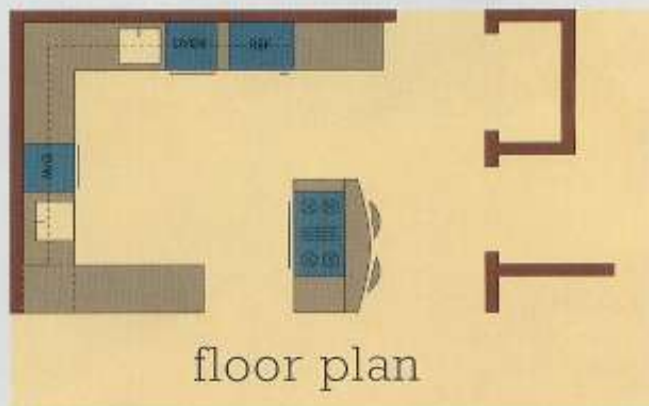
The original 19th-century warehouse on the waterfront in downtown Boston had been converted to a residential condominium in the early 1970s. When a young couple that worked in the city bought one unit, they gave Feinmann some very specific requests. They asked that the public areas—

a hallway, living-dining room and kitchen—be more open to one another. And despite the spiffing up, they wanted to retain existing wood beams and brick walls.

Feinmann arranged stainless-steel appliances on two counter legs, with tops in practical black granite speckled with a rich green and gold. A third leg with a cherry top serves as a serving counter open to the dining room, beneath which are matching wine coolers and cookbook shelves. The fourth leg is a two-level island with a lower granite surface for working and an upper level for eating or setting out more food.

Inspired by the existing beams, Feinmann selected old-growth red oak floors for the adjacent rooms and designed cabinets, a hutch, wine bar, eating ledge supported by curved brackets and another countertop in cherry. For a lighter contrast with so much rich wood, the floor was paved in big squares of natural travertine and the backsplash combines beige tiles with some darker ones brought back from Turkey.

To keep the new kitchen from becoming claustrophobic, Feinmann didn't bring cabinets all the way up to the beams but left some room to display baskets and bric-a-brac. He also lit the room with low-voltage spots that flicker between the beams.





**DESIGNER/
REMODELER:**

Peter Feinmann
Feinmann Inc.
1378 Massachusetts Ave.
Arlington, MA 02476
781-643-6269
www.feinmann.com

LOCATION:

Boston, MA

DIMENSIONS:

18' by 12'6"

SPECIAL FEATURES:

Cherry cabinets that repeat patina of exposed beams; Kitchen open to the rest of the condominium; Echo the wood of the beams in wood flooring beyond the kitchen work area

PRODUCTS USED:

Refrigerator/freezer: KitchenAid
Wine refrigerators: U-line
Oven: Thermador
Microwave: Sharp
Dishwasher: Fisher & Paykel
Sink, fixtures: Franke
Garbage disposal: In-Sink-Erator
Countertops: black

granite, Garry Stone, and cherry
Cabinetry, cherry: Kochman, Reidt & Haigh, Stoughton, MA
Pulls, knobs: Oil-rubbed bronze
Flooring: Travertine in work area; old-growth red-oak hardwood in other areas

A peninsula is open to the dining and living room, with matching wine coolers and bookshelves serving both areas.

Wood cabinets and beams create an age-appropriate design, but splashes of stainless prove the room's functionality.



CRAIG DAVIS, MAPLEHEAD, MA



harmonious balance

AN EARLY 19TH-CENTURY CITY
HOME GETS A CUTTING EDGE

- WISH LIST**
- Retain existing fireplace
 - Include eat-in space while maintaining circulation between front and back of the house
 - Clean, contemporary warm look

When two professionals moved into an 1840s house in Cambridge, Massachusetts, that had been updated in the 1970s, they asked designer/remodeler Peter Feinmann of Feinmann, Inc. in Arlington, Massachusetts, to transform the kitchen. They wanted it more attractive, more conducive to cooking, eating and doing work at the kitchen table, and with more storage. They also requested a plan that would allow traffic to flow from the dining room on one side of the kitchen to a family room on the opposite end without getting into anyone's way.

Feinmann's layout solved all these requests while also creating a quietly elegant, contemporary expanse. His strategy was to place stainless steel-

fronted equipment in a traditional triangle layout, but at one end of the kitchen, so appliances are all close to one another. A freestanding table, rather than a large space-consuming island, was placed at the other end close to a fireplace and bookshelves where a TV sits. In between there is plenty of room, plus a nice long "aisle" between the adjacent rooms for traffic to flow.

The design of the room offers that special combination of modern yet warm, achieved by selecting unadorned cherry cabinets with a sequenced matte veneer, a cork floor and a fireplace wall of deep rich 12" by 12" gray slate tiles, which also line backsplashes. Cabinetry along the two long and one short walls offers the desired storage and upper cabinets have ribbed frosted glass to reflect the contemporary spirit. Countertops are granite. Illumination is quietly graceful, too, with some recessed spots and a curved track light that highlights the eating area. The cork floor fits in with the mood of the other materials and offers a soft, resilient floor on which to walk and work.

Two of Feinmann's favorite features of the room are the verticality of the fireplace wall and the choice of finishes. The simple but elegant surfaces give the room its strong architectural flavor.

floor plan





**DESIGNER/
REMODELER:**

Peter Feinmann
Feinmann, Inc.
1378 Massachusetts Ave.
Arlington, MA 02476
781-643-6269
www.feinmann.com

LOCATION:

Cambridge, MA

DIMENSIONS:

13'6" by 18'6"

SPECIAL FEATURES:

Natural cork flooring for warmth and a modern touch; Slate tiles at the fireplace to anchor the mass of the refrigerator/freezer and bookshelves; Cherry cabinets with a sequenced matte veneer

PRODUCTS USED:

Refrigerator: Sub-Zero
Cooktop, range: Dacor

Sink: Franke

Faucets/fixtures:

Waterspot

Dishwasher: Fisher & Paykel

Cabinets: Corsi

Countertops, granite: Garrity Stone

Flooring, cork:

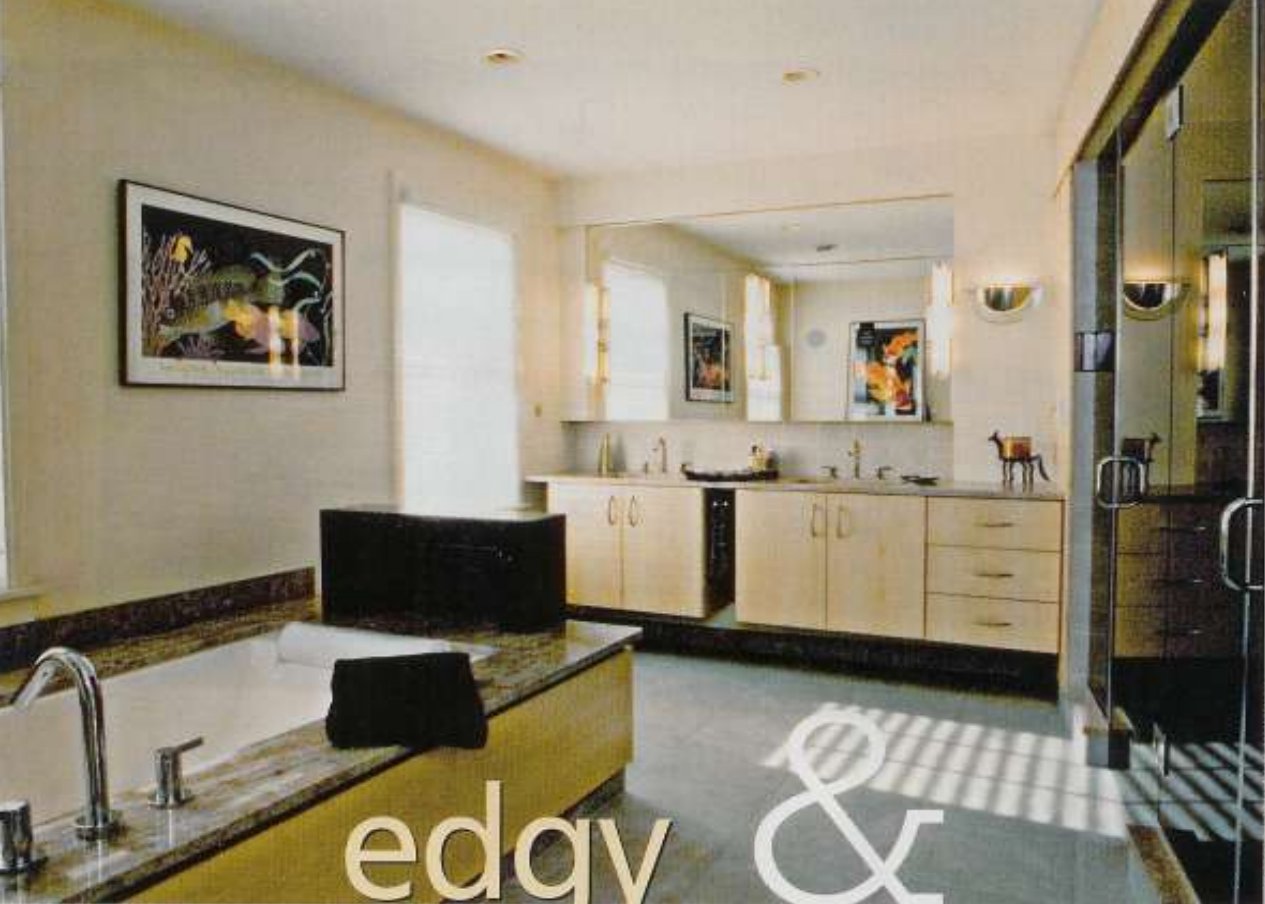
Prosource

Backsplash, gray slate tiles:

Prosource

The kitchen consists of a simple arrangement of appliances with cooktop and oven on a short wall, refrigerator a few steps away and the sink on an opposite long wall (not in view) and with the table in between all.

The dining table sits near the fireplace wall; slate along the fireplace is repeated in the backsplashes.



CRAG DAVIS, MARBLEHEAD, MA



edgy & innovative

AN 1840S GREEK REVIVAL STEPS INTO THE 21ST CENTURY

WISH LIST

- Update inadequate master bathroom
- Bring in modern feeling incorporated in rest of the house
- Add enough storage but conceal it well

The owners of an 1840s Greek Revival house in Cambridge, Massachusetts, faced several changes in modernizing their kitchen (see page 34) and master bathroom. Because the house was located in an historic district, they had to focus their remodeling efforts within and leave the exterior intact, explains Peter Feinmann, president of Feinmann, Inc. in Arlington, Massachusetts, which orchestrated the redos. For the small master bathroom at the front of the house, architect Barney Maier developed an innovative design that gives the couple the cutting-edge design they sought, as well as all the components they requested—walk-in shower, toilet stall, separate tub, generous storage, washer-dryer.

Maier combined the small bathroom with an adjacent sitting room to provide the needed square footage. Then he designed a long diagonal wall that adds modern verve and also avoids jogs or extensions (that could have resulted from components behind the wall requiring different depths). While Maier felt a sandblasted glass wall would best conceal the shower and toilet, the owners suggested tinted glass. “They really pushed the envelope and were right,” Maier says. “The tinted glass reflects the light better and also has a see-through quality.” The glass changes to a pale cherry facade to conceal the laundry equipment and storage.

To make the tub an equally strong visual anchor, Maier designed a granite surround in a reddish hue and a “monolithic” black granite slab at the end closest to the vanity. This feature adds height to the tub without closing in the bathroom, Maier says.

For additional color and texture, a maroon band of tile runs through the shower; the floor is paved in gray ceramic tiles that look like slate; and the vanity is built from the same pale cherry used for wall storage. Recessed medicine cabinets add another contemporary touch. White painted walls and recessed cans add brightness, since existing windows couldn’t be changed.





**ARCHITECT/
DESIGNER:**

Barney Maier and
Peter Feinmann
Feinmann, Inc.
1378 Massachusetts Ave.
Arlington, MA
02476
781-643-6269
www.feinmann.com

LOCATION:
Cambridge, MA

SPECIAL FEATURES:
Tinted glass wall that
provides privacy to
toilet and shower areas;
Dramatic diagonal
plane that divides
master bedroom and
bathroom; Concealed

washer-dryer and storage
behind wood cabinetry

DIMENSIONS:
15'6" by 22'6"

PRODUCTS USED:
**Shower and faucet
fittings:** Kohler
Bathtub: Americh Concord
Laundry equipment: Asko

Along the diagonal wall, tinted glass provides privacy to those using the shower or toilet; wood paneling conceals a washer-dryer and storage.

Two strong architectural features of this bathroom add contemporary verve—a diagonal tinted glass wall and a separate tub with granite slab.